




Natural Gas Connection Policy and Procedures

Updated 1 April 26

Table of Contents

1.	General Information	1
1.1	Purpose of this Document	1
1.2	Singapore Gas Transportation System	1
1.3	Definitions	2
1.4	Codes of Practices and Regulatory Requirements	3
1.5	Submission of Application	3
2.	Procedures for Gas Connection, Gas Admittance, and Gas Turn-On	4
2.1	Apply for Gas Connection	4
2.2	Make Payment.....	5
2.3	Engage DR for gas installation	6
2.4	Apply for Gas Admittance	7
2.5	Apply for Supply and Gas Turn On.....	8
3.	Guidelines for Other Applications	9
3.1	Apply for Replacement, Addition & Alteration, or Modification Works	9
3.2	Apply for Disconnection	9
3.3	Apply for Re-connection.....	9
4.	Charges.....	10
4.1	Connection Policy.....	10
4.2	Connection Charge	10
5.	Appendices	11
	Appendix 1 – Demarcation of responsibility.....	11
	Appendix 2 – Transmission Connection Flow Chart.....	12
	Appendix 3 – Transmission Connection Application Forms.....	15
	Appendix 4 – Distribution Connection Flow Chart	16
	Appendix 5 – Distribution Connection Application Forms	18
	Appendix 6 – Reference Rates for Transmission Project	19
	Appendix 7 – Reference Rates for Distribution Project	20
	Appendix 8 – Deductible Component for Natural Gas Distribution Connection.....	21

	Natural Gas Connection Policy and Procedure	
	Updated 1 Apr 26	Page 1

1. General Information

1.1 Purpose of this Document

PowerGas is a Gas Transporter licensed by the Energy Market Authority (“Authority”). PowerGas owns, operates, and maintains the piped gas network in Singapore.

SP PowerGrid (“SPPG”) is a Gas Transport Agent licensed by the Authority. SPPG operates and maintains the piped gas network in Singapore on behalf of PowerGas. SPPG’s gas business is to plan, design, operate and maintain gas network assets in a manner that supports the delivery of safe, reliable, efficient, and quality services to customers.

Under the Gas Transporter Licence, the Gas Transporter is to develop separate fees and charges for separate gas transportation services such as connection services and transportation services and metering services. This document sets out the connection policy and procedure for Natural Gas supply.

1.2 Singapore Gas Transportation System

PowerGas owns an extensive gas transmission and distribution network throughout Singapore. The network is generally buried underground and transports natural gas to the western and northern parts of Singapore, and town gas to the whole of Singapore.

The gas assets comprise the transmission network (operating at higher pressures), which forms the main reticulation backbone and the distribution network (operating at lower pressures).

- Town gas is manufactured in Senoko Gasworks and delivered to approximately 923,000 customers in Singapore. The customers are made up of industrial, commercial, and residential gas users. Residential customers consist mainly of gas users from HDB, condominiums and landed premises. The town gas transmission network operates at 3 barg whereas the distribution network operates at pressure regimes ranging from 1 kPa to 70 kPa.

Natural gas is supplied to about 200 customers and is imported from four sources (two submarine pipelines from Indonesia, one submarine pipeline from Malaysia and internationally through the Liquefied Natural Gas Terminal). These natural gas customers are typically power stations, industrial and commercial gas users. The natural gas transmission network operates at two pressure regimes, 28 barg and 40 barg, and the distribution network operates at pressure regimes ranging from 3 barg to 6.2 barg.

1.3 Definitions

The following definitions used in the standard have been reproduced/adapted from the Gas Act 2001 and Gas (Supply) Regulations:

- designated representative or “DR”
- licensed gas service worker or “LGSW”
- gas transporter or “Transporter”
- gas retailer or “Retailer”
- gas shipper or “Shipper”
- gas mains network
- gas service work
- gas service isolation valve or “GSIV”
- gas service pipe
- gas fitting
- gas installation
- gas meter control valve
- Internal pipe
- meter installation
- professional engineer or “PE”
- responsible person

1.4 Codes of Practices and Regulatory Requirements

This connection procedure shall be read in conjunction with the provisions in the Gas Act, Gas [Supply] Regulations, Gas [Metering] Regulations, Gas Supply Code, Gas Metering Code, Gas Network Code, Singapore Standard, SS608 – Code of Practice for Gas Installation and relevant Retailer’s Handbook of Gas Supply, where applicable.

The demarcation of responsibility from the gas service pipe to the gas installation is provided in Appendix 1 for reference purpose.

1.5 Submission of Application

Please submit all connection enquiries and applications for gas connection via the Gas Shipper/Retailer on SP Group’s eBusiness Portal (“Portal”):

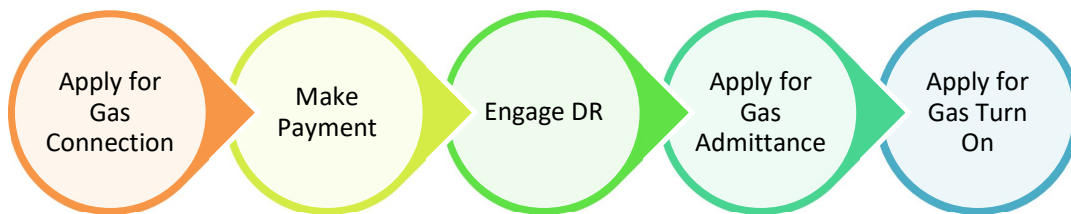
<https://ebiz.spgroup.com.sg/index.html>

For all other matters, please submit your enquiries to:

gasenquiry@spgroup.com.sg

2. Procedures for Gas Connection, Gas Admittance, and Gas Turn-On

An application for connection to the gas pipeline network shall be submitted to the Transporter through the Shipper/Retailers. The Shipper/Retailer will liaise with the Transporter on behalf of the applicant for gas connection and gas admittance. The key steps for gas connection and gas admittance are outlined below. The detailed process flow chart and Natural Gas connections application forms can be found in Appendices 2 to 5.




2.1 Apply for Gas Connection

Transmission Connection

Consumer's pressure requirement of at least 18 barg shall be eligible for connection to a transmission pipeline, subject to Gas Transporter's assessment. The actual delivery pressure would vary depending on the location of the offtake point. Consumers requiring higher or lower pressure than the transmission network operating pressure shall at its own cost install the necessary equipment to achieve the required pressure.

To apply for a natural gas transmission connection, a Shipper shall submit the following documents and information through the Portal:

- Endorsed Form GT1 - "Application for Gas Transmission Connection"; Consumer Project Data Sheet [Appendix 3];
- Location/ site plan showing:
 - The project site;
 - Location of the proposed connection point; and
- Location of the proposed new Meter Installation to be built and owned by the Transporter, where applicable.

	Natural Gas Connection Policy and Procedure	
	Updated 1 Apr 26	Page 5

The Transporter shall seek the Authority's endorsement for the proposed transmission connection. The Transporter shall notify the Shipper on the outcome of the application within 21 days, after obtaining a reply from the Authority. If the application is successful, the connection charge and project lead time will also be made known to the Shipper.

Shippers are advised to request for a consultation through the Portal and arrange for discussion and/or site visit with the Transporter for assessment prior to submitting a formal application for gas connection.

Distribution Connection

To apply for a natural gas distribution connection, the Retailer shall submit the following documents and information through the Portal:

- Endorsed Form GD1 - "Application for Gas Distribution Connection"; and
- Location / site plan showing:
 - The project site;
 - Proposed connection point(s) including the demarcation of the responsibility and the material for connection from the internal pipe to GSIV shall be polyethylene end.
- Location of meter installation and indicative pipe route from property boundary to the meter installation

The Transporter shall notify the Retailer on the outcome of the application within 14 days from the date of receipt of the application. If the application is successful, the connection charge will also be made known to the Retailer.

2.2 Make Payment


The Shipper/Retailer shall confirm the project by making payment for the connection charge.

Transmission Connection

The Shipper shall confirm the project by making payment for the connection charge.

Upon project confirmation, the Transporter shall commence permit application, procurement and construction works to extend gas pipeline up to and including the GSIV.

The Shipper shall apply for pipeline capacity soonest possible. Issuance of capacity certificate is on a first-come-serve basis.

	Natural Gas Connection Policy and Procedure	
	Updated 1 Apr 26	Page 6

Distribution Connection

The Retailer shall confirm the project by making payment for the connection charge.

Upon project confirmation, the Transporter shall commence permit application, procurement and construction works to extend gas mains up to and including the GSIV.

The Retailer’s appointed Shipper shall apply for a Distribution Network Offtake Point Registration Certificate in accordance with the GNC. The Retailer/Shipper shall not be entitled to offtake gas unless such Shipper has a valid Distribution Network Offtake Point Registration Certificate.

2.3 Engage DR for gas installation

The applicant shall engage a PE or a LGSW, as the case may require, as the DR for the project.

Transmission Connection


The Shipper and the DR shall liaise with the Transporter on the connection point at the property boundary, and where applicable, the location of the GSIV and/or Meter Installation within the premises, the work schedule and other related matters throughout the entire project until final commissioning.

The DR is responsible for the design, procurement, construction, and commissioning of the Gas Fittings from the GSIV to the appliance/equipment including the Meter Installation, where applicable, in compliance with the Gas Act and its subsidiary legislations and applicable Code(s).

Distribution Connection

The Retailer and the DR shall liaise with the Transporter on the connection point at the property boundary, the work schedule, the location of the Meter Installation within the consumer’s premises and other related matters throughout the entire project until commissioning.

The DR is responsible for the design, procurement, and construction of the gas installation from the GSIV [after the connection point] to the appliance/equipment, excluding the meter installation, in compliance with the Gas Act and its subsidiary legislations and applicable Code(s).

	Natural Gas Connection Policy and Procedure	
	Updated 1 Apr 26	Page 7

2.4 Apply for Gas Admittance

Transmission Connection

The DR shall certify completion and successful testing of the gas fittings downstream of the GSIV, excluding the GSIV, up to the meter installation, but exclude the meter installation. When the gas fittings, up to, but exclude, the meter installation and the site are ready to receive gas, the applicant/DR shall apply, through the Shipper, to the Transporter to connect and admit gas into the gas fittings up to, but exclude, the meter installation, where applicable, by submitting the following form:

- Form GT2 - “Application for Admittance of Gas”

The DR shall conduct the necessary proof test and complete Form GT3 “Certificate of Proof Test” prior to the Transporter interim admittance of gas into the gas fitting up to, but exclude, the meter installation.

Upon successful interim admittance of gas, the Transporter shall issue the “Statement of Interim Admittance of Gas”.

Thereafter, the DR shall proceed to purge and commission the gas fittings up to, but exclude, the meter installation. Upon certification of successful purging and commissioning of the gas fittings up to, but excluding, the meter installation by the DR, the Transporter shall issue the “Statement of Admittance of Gas”.


If the meter installation is owned by the Transporter, the Transporter shall proceed to purge and commission the meter installation when the site is ready and notify the DR. For the case where meter installation is not owned by the Transporter, DR shall proceed to purge and commission the meter installation when the site is ready.

Distribution Connection

The DR shall certify completion and successful testing of the gas installation. When the gas installation is ready to receive gas, the DR shall apply, through the Retailer, to the Transporter to connect and admit gas into the gas installation up to, but excluding, the meter installation by submitting the following form:

- Form GD2 - “Application for Admittance of Gas”

The DR shall conduct the necessary proof test and submit the completed Form GD3 “Certificate of Proof Test” and request for interim admittance of gas immediately prior to the Transporter connecting the gas installation to the gas pipeline network and admitting gas into the gas installation up to, but excluding, the meter installation.

	Natural Gas Connection Policy and Procedure	
	Updated 1 Apr 26	Page 8

Upon successful interim admittance of gas, the Transporter shall issue the “Statement of Interim Admittance of Gas”. Thereafter, the DR shall proceed to purge and commission the gas installation up to, but excluding, the meter installation.

The Transporter shall issue the “Statement of Admittance of Gas” upon certification by the DR of successful purging and commissioning of the gas installation up to, but exclude, the meter installation.

2.5 Apply for Supply and Gas Turn On

The applicant/DR shall liaise with the Shipper/Retailer to carry out gas turn-on when the internal pipe, gas fittings, and the site are ready to receive gas.

Transmission Connection


Where the Meter Installation is owned by the Transporter, the applicant/DR shall submit Form GT4 “Authorisation to Turn on Gas Meter Control Valve” to instruct the Transporter to open the gas meter control valve for gas turn-on from the meter installation to the appliances/equipment.

The DR shall proceed with gas turn-on from the meter installation up to the appliance.

For purging of the meter installation and gas turn on, the Shipper shall nominate for gas flow in accordance to Gas Network Code.

Distribution Connection

An application for gas supply shall be made to the retailer in accordance with the Retailer’s “Handbook for Gas Supply”.

	Natural Gas Connection Policy and Procedure	
	Updated 1 Apr 26	Page 9

3. Guidelines for Other Applications

3.1 Apply for Replacement, Addition & Alteration, or Modification Works

When supply of gas needs to be shut off at the GSIV to facilitate replacement, addition and alteration, or modification to a distribution gas installation from the GSIV to the meter installation, the DR shall make the necessary arrangement with the Transporter via Transporter's email address in Section 1.5.


For any modification to a transmission gas installation, the Shipper shall submit Form GT1, Consumer Project Data Sheet [Appendix 3] and schematic diagram of the proposed modification with respect to the existing metering station via Transporter's email address in Section 1.5.

3.2 Apply for Disconnection

An application for the disconnection of the gas installation or gas fitting from a gas mains network shall be made to the Transporter's email address in Section 1.5.

3.3 Apply for Re-connection

An application for the re-connection of the gas installation or gas fitting shall be made to the gas transporter, through the Retailer/Shipper, via the Transporter's Portal in Section 1.5.

	Natural Gas Connection Policy and Procedure	
	Updated 1 Apr 26	Page 10

4. Charges

4.1 Connection Policy

The cost to connect a customer's gas installation or gas fitting to the Transporter's gas pipeline network varies from case-to-case. The Transporter will propose the most feasible connection to the customer's location depending on the proximity of its location to the existing gas mains network and site conditions.

4.2 Connection Charge

The connection charge payable for all gas connection applications is the project cost less the deductible cost, subject to a minimum connection charge of zero. The description of each of the cost components are shown below.

[1] Project Cost

All costs related to the provision of gas connection from the Transporter's gas pipeline network to the GSIV, including the meter installation (where applicable). [see Appendix 6 and 7]

[2] Deductible Cost

The Transporter's investment value based on the committed gas demand from the applicant for the new gas connection. For distribution connections, the investment value is derived based on the net present value of the 5-Year revenue of the average consumption for each consumption category [see Appendix 8].

For transmission connections, the connection charges are calculated individually on a case-by-case basis.

In addition, a Last Mile Connection Charge ["LMCC"] will be levied to recover the cost of the "last mile" connection of the gas installation to the GSIV from the applicant.

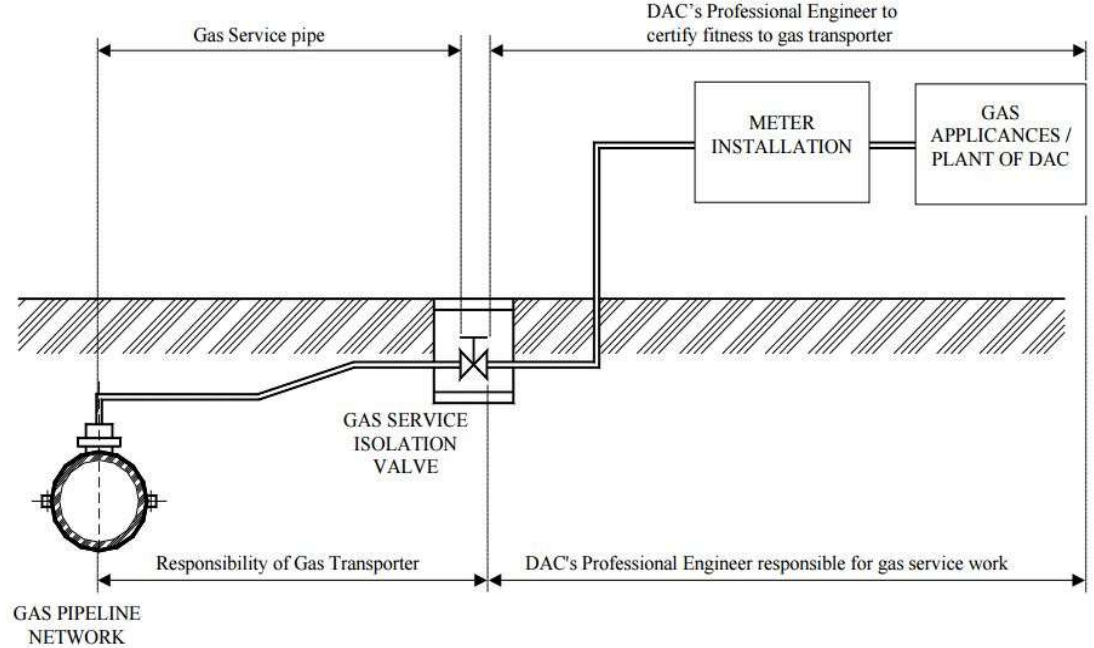
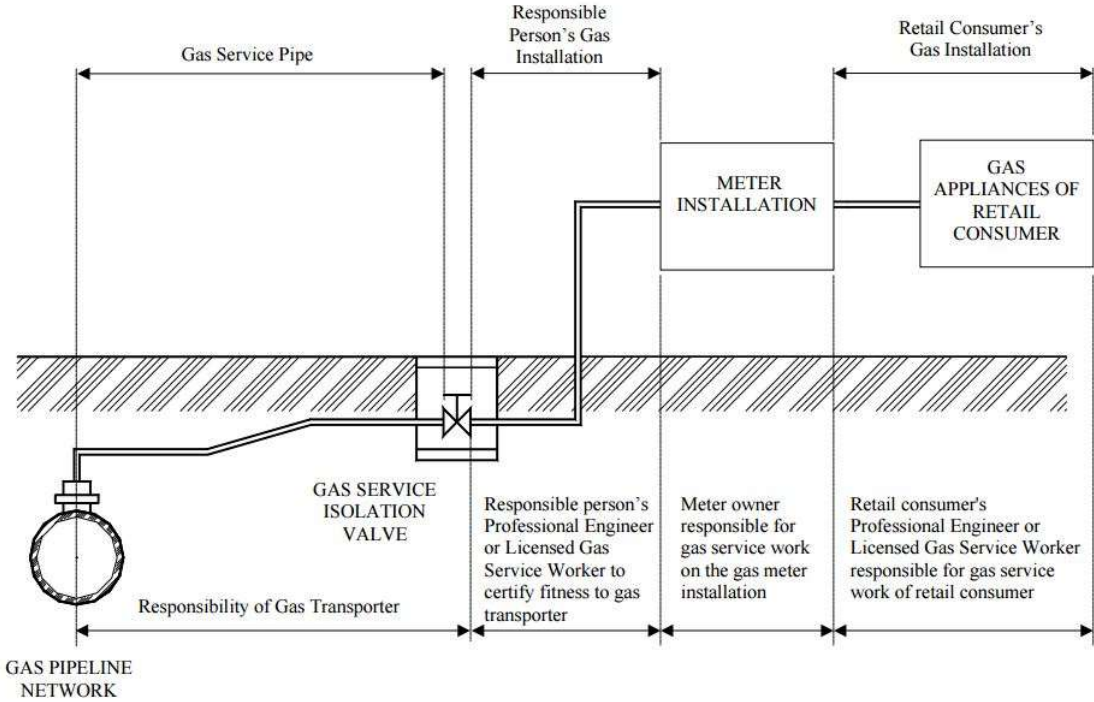
The natural gas transmission/distribution connection Deductible Cost, LMCC and unit rates used in the determination of the transmission/distribution pipeline estimated capital investment shall be reviewed and adjusted when deemed necessary by the Transporter.

The Transporter reserves the right to review the connection charge paid for any new connection and seek reimbursement for the first 5 years under-recovered revenue from the Shipper/Retailer if the actual total gas consumption over the first 5 years of operation¹ is less than 90% of the cumulative projected gas demand declared during application.¹

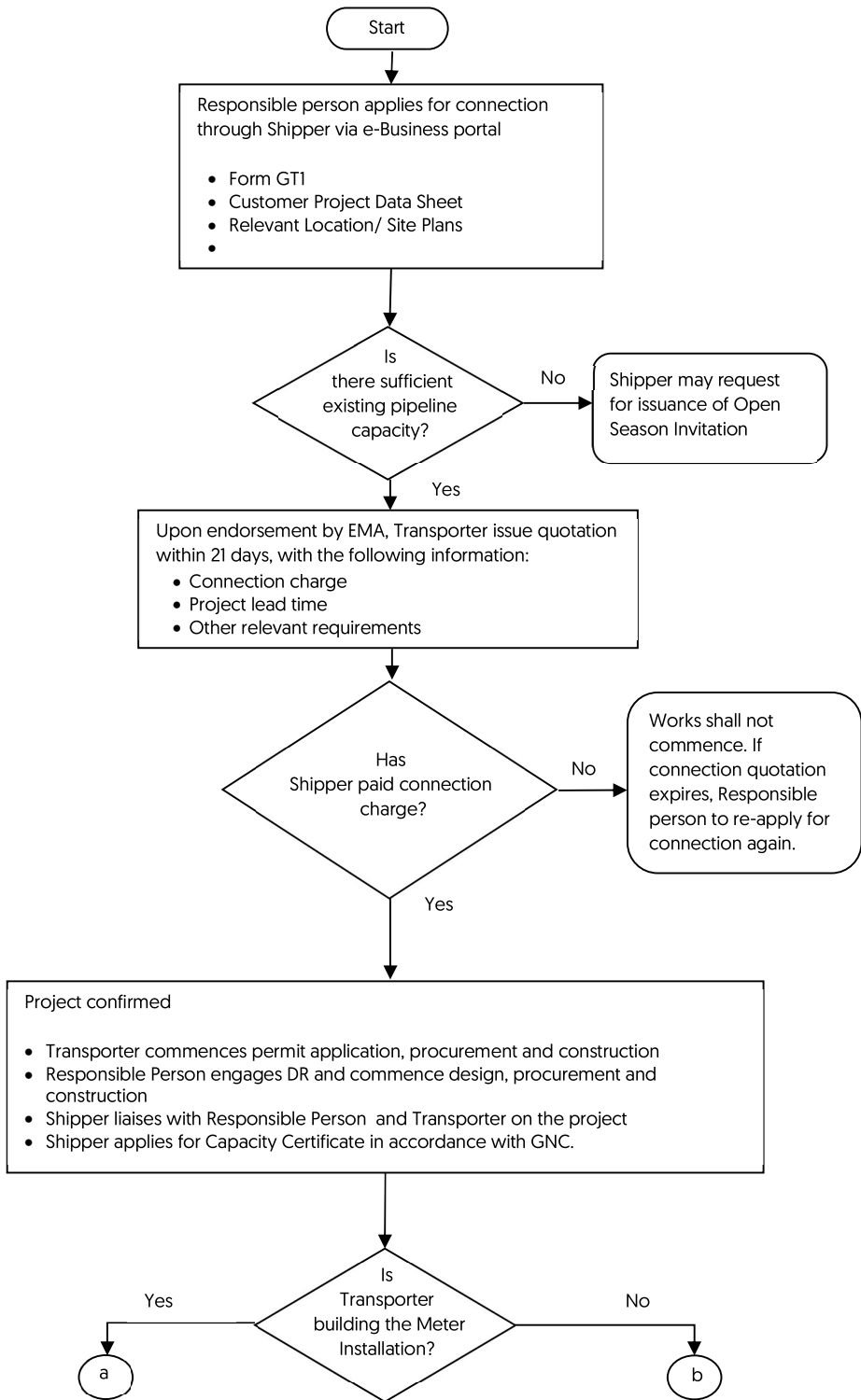
¹ The commencement of the 5-year operating period is based on the gas admittance date indicated in the "Statement of Admittance of Gas".

5. Appendices

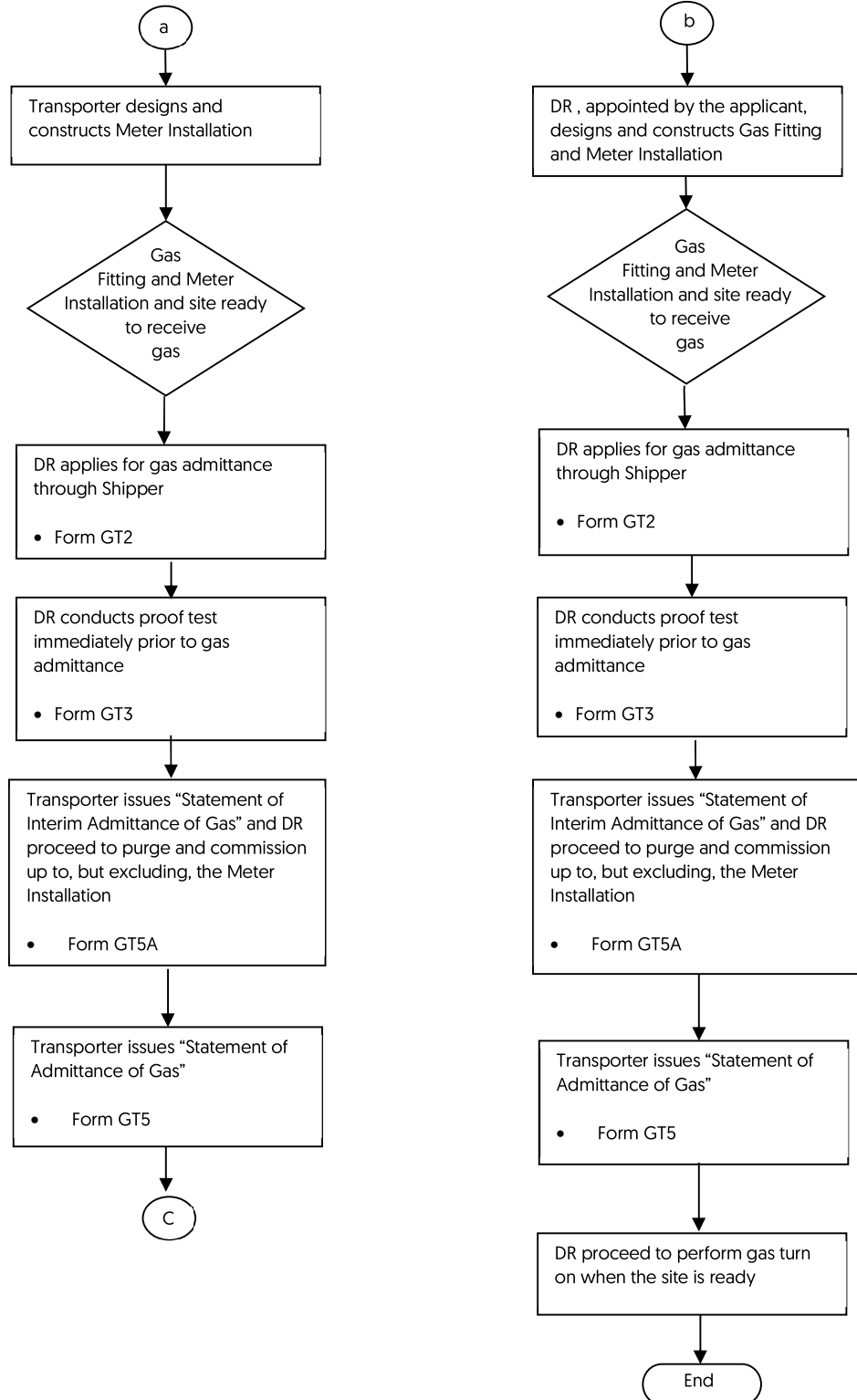
Appendix 1 – Demarcation of responsibility

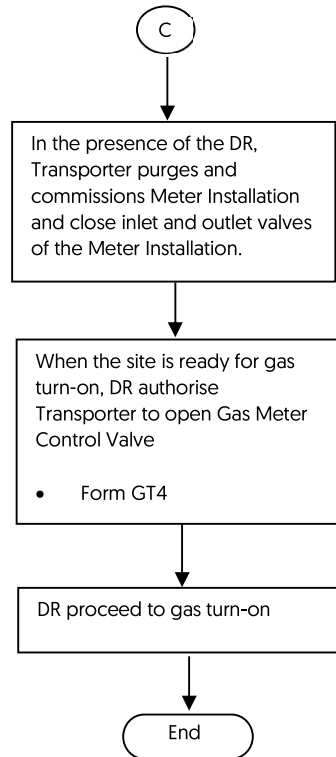


Appendix 2 – Transmission Connection Flow Chart



Appendix 2 – Transmission Connection Flow Chart (Cont'd)

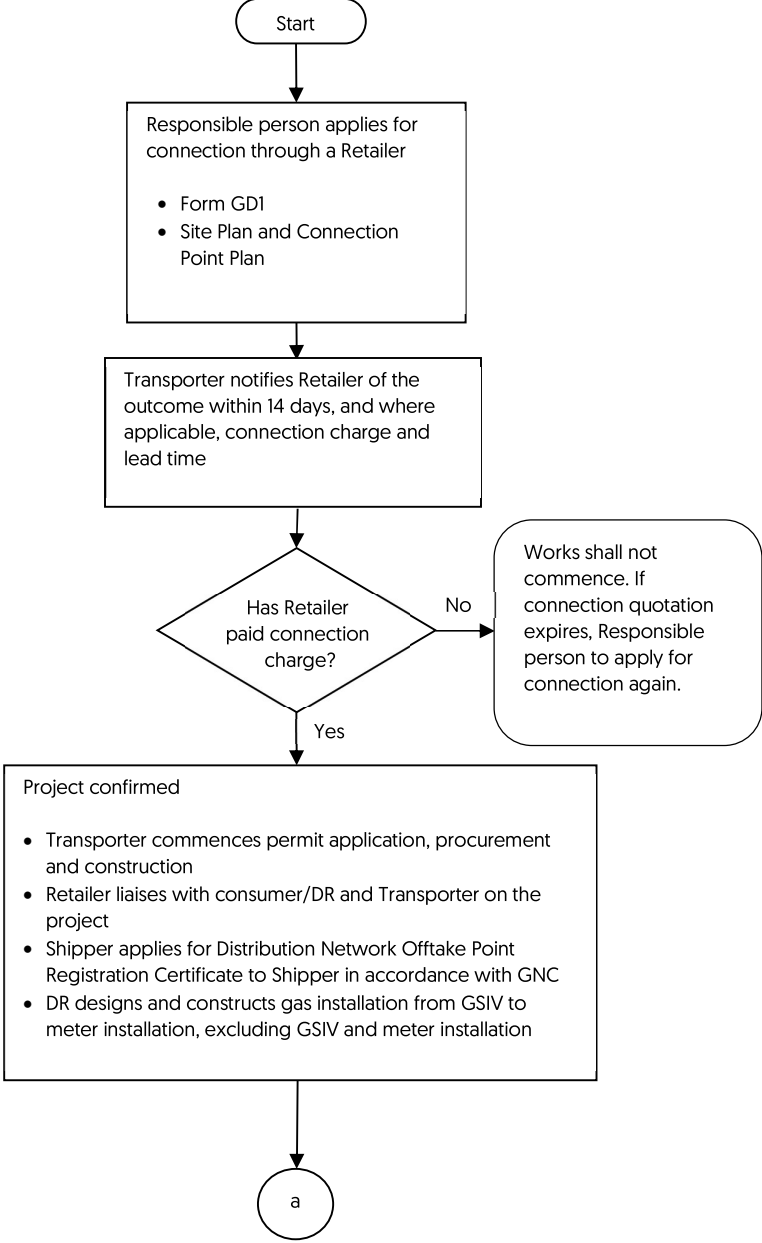




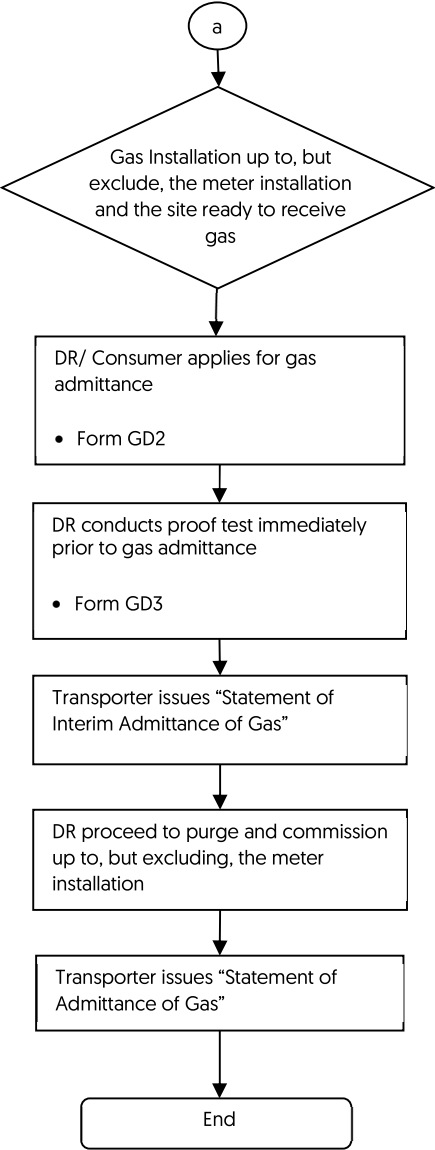
Appendix 3 – Transmission Connection Application Forms

S/No.	Form No.	Description
1	GT1	Application for Gas Transmission Connection
2	GT2	Application for Admittance of Gas
3	GT3	Certificate of Proof Test
4	GT4	Authorisation to Turn On Gas Meter Control Valve
5	GT5	Statement of Admittance of Gas
6	GT5A	Statement of Interim Admittance of Gas

Appendix 4 – Distribution Connection Flow Chart



Appendix 4 – Distribution Connection Flow Chart (Cont'd)



Appendix 5 – Distribution Connection Application Forms

S/No.	Form No.	Description
1	GD1	Application for Gas Distribution Connection
2	GD2	Application for Admittance of Gas
3	GD3	Certificate of Proof Test

Appendix 6 – Reference Rates for Transmission Project

This sets out a non-exhaustive list of the main cost drivers and the corresponding unit rates used in the cost estimation of a new transmission pipeline. For the avoidance of doubt, the information set out herein is provided solely for reference and is based on prevailing rates as of 1 Apr 2026.

S/No.	Description		Size	Unit Rate (\$) excl. GST	Unit Rate (\$) incl. 9% GST
1	Laying of underground steel pipeline (\$/m)		300mm	12,100	13,189
2	Pipe jacking	Boring and installation of concrete pipe sleeve and pipeline (\$/m)	-	11,100	12,099
3		Construction of jacking and receiving pit (\$/pair)	-	1,226,000	1,336,340
4	Installation of underground valve (\$/set)		300mm	479,000	522,110
5	Electrical and Instrumentation	Installation of surveillance system, SCADA RTU and Security RTU (\$/set)	-	1,047,000	1,141,230
6	Hot tapping works	Tee-off from existing 700mm dia pipeline (\$/job)	300mm	224,000	244,160
7	LTA road opening charges			Refer to LTA's website	

Note:

- Figures may not reflect the full GST effect due to rounding.

Appendix 7 – Reference Rates for Distribution Project

This sets out a non-exhaustive list of the main cost drivers and the corresponding unit rates used in the cost estimation for a new distribution pipeline. For the avoidance of doubt, the information set out herein is provided solely for reference and is based on prevailing rates as at 1 Apr 2026.

S/N o.	Description	Size	Unit Rate (\$) excl. GST	Unit Rate (\$) incl. 9% GST
1	Supply and Laying of PE pipes and fittings (\$/m)	315mm	980	1,069
2	Connection to existing pipes (\$/job)	315mm	13,000	14,170
3	Installation of Valve (\$/job)	300mm	8,500	9,010
4	Reinstatement of rigid pavement / concrete panel (\$/m ²)		300	327
5	LTA road opening charges		Refer to LTA's website	

Note:

- Figures may not reflect the full GST effect due to rounding.

Appendix 8 – Deductible Component for Natural Gas Distribution Connection

[wef 1 Apr 26]

c = Consumption per Annum (MMBtu)	Distribution connection within JIT (\$)	Distribution connection outside JIT (\$)
$c \leq 5,000$	nil	nil
$5,000 < c \leq 15,000$	70,000	165,000
$15,000 < c \leq 25,000$	140,000	325,000
$25,000 < c \leq 35,000$	205,000	490,000
$35,000 < c \leq 45,000$	275,000	650,000
$45,000 < c \leq 55,000$	345,000	815,000
$55,000 < c \leq 65,000$	415,000	975,000
$65,000 < c \leq 75,000$	485,000	1,140,000
$75,000 < c \leq 85,000$	550,000	1,305,000
$85,000 < c \leq 95,000$	620,000	1,465,000
$95,000 < c \leq 105,000$	690,000	1,630,000
$105,000 < c \leq 115,000$	760,000	1,790,000
$115,000 < c \leq 125,000$	830,000	1,955,000
$125,000 < c \leq 135,000$	895,000	2,115,000
$135,000 < c \leq 145,000$	965,000	2,280,000
$145,000 < c \leq 155,000$	1,035,000	2,445,000
$155,000 < c \leq 165,000$	1,105,000	2,605,000
Beyond 165,000	1,140,000	2,640,000