



Town Gas Connection Policy and Procedures

Updated 1 April 26

Table of Contents

1.	General Information	1
1.1	Purpose of this Document	1
1.2	Singapore Gas Transportation System	1
1.3	Definitions	2
1.4	Codes of Practices and Regulatory Requirements	3
1.5	Submission of Application	3
2.	Procedures for Gas Connection, Gas Admittance, and Gas Turn-On	4
2.1	Apply for Gas Connection	4
2.2	Make Payment.....	4
2.3	Engage DR for Consumer's Gas Installation	5
2.4	Apply for Gas Admittance	5
2.5	Apply to Retailer for Turn On of Gas Supply	5
3.	Guidelines for Other Applications	6
3.1	Apply for Replacement, Addition & Alteration Works	6
3.2	Apply for Disconnection	6
3.3	Apply for Re-connection.....	6
4.	Charges.....	1
4.1	Connection Policy	1
4.2	Connection Charge	1
5.	Pressure Regulation for Internal Gas Pipeline	2
6.	Appendices	3
	Appendix 1 – Demarcation of Responsibility	3
	Appendix 2 – Town Gas Distribution Connection Flow Chart.....	4
	Appendix 3 – Town Gas Connection Application Forms	6
	Appendix 4 – Reference Rates	7
	Appendix 5 – Deductible Component for Town Gas Distribution Connection	8
	Appendix 6 – Last Mile Standard Connection Charge.....	10

1. General Information

1.1 Purpose of this Document

PowerGas is a Gas Transporter licensed by the Energy Market Authority (“Authority”). PowerGas owns, operates, and maintains the piped gas network in Singapore.

SP PowerGrid (“SPPG”) is a Gas Transport Agent licensed by the Authority. SPPG operates and maintains the piped gas network in Singapore on behalf of PowerGas. SPPG’s gas business is to plan, design, operate and maintain gas network assets in a manner that supports the delivery of safe, reliable, efficient, and quality services to customers.

Under the Gas Transporter Licence, the Gas Transporter is to develop separate fees and charges for separate gas transportation services such as connection services and transportation services and metering services. This document sets out the connection policy and procedure for town gas supply.

1.2 Singapore Gas Transportation System

PowerGas owns an extensive gas transmission and distribution network throughout Singapore. The network is generally buried underground and transports natural gas to the western and northern parts of Singapore, and town gas to the whole of Singapore.

The gas assets comprise the transmission network (operating at higher pressures), which forms the main reticulation backbone and the distribution network (operating at lower pressures).

- Town gas is manufactured in Senoko Gasworks and delivered to approximately 911,000 customers in Singapore. The customers are made up of industrial, commercial and residential gas users. Residential customers consist mainly of gas users from HDB, condominiums and landed premises. The town gas transmission network operates at 3 barg whereas the distribution network operates at pressure regimes ranging from 1 kPa to 70 kPa.
- Natural gas is supplied to about 200 customers and is imported from four sources (two submarine pipelines from Indonesia, one submarine pipeline from Malaysia and internationally through the Liquefied Natural Gas Terminal). These natural gas customers are typically power stations, industrial and commercial gas users. The natural gas transmission network operates at two pressure regimes, 28 barg and 40 barg, and the distribution network operates at pressure regimes ranging from 3 barg to 6.2 barg.

1.3 Definitions

The following terms shall have the following meanings when used in this document.

“Authority” means the Energy Market Authority of Singapore established under the Energy Market Authority of Singapore Act [Cap.92B];

“Gas Transporter” or “Transporter” shall have the meaning as defined in the Gas Act [Chapter 116A];

“Gas Retailer” or “Retailer” shall have the meaning as defined in the Gas Act [Chapter 116A];

“Gas Shipper” or “Shipper” shall have the meaning as defined in the Gas Act [Chapter 116A];

“Gas Network Code” means a code issued by the Authority or modified under section 61B of the Gas Act [Chapter 116A];

“Designated Representative” or “DR” shall have the meaning as defined in the Gas [Supply] Regulations;

“Direct Access Customer” shall have the meaning as defined in the Gas Act [Chapter 116A];

“Professional Engineer” or “PE” means any person who is registered as a professional engineer in the mechanical engineering discipline under the Professional Engineers Act [Cap. 253];

“Licensed Gas Service Worker” or “LGSW” means a person who is licensed under section 12 [3] of the Gas Act [Chapter 116A];

“gas service work” shall have the meaning as defined in the Gas Act [Chapter 116A];

“Gas Service Isolation Valve” or “GSIV” shall have the meaning as defined in the Gas Act [Chapter 116A];

“gas service pipe” shall have the meaning as defined in the Gas Act [Chapter 116A];

“Gas Fitting” shall have the meaning as defined in the Gas Act [Chapter 116A];

“Gas installation” shall have the meaning as defined in the Gas Act [Chapter 116A];

“Gas Meter Control Valve” shall have the meaning as defined in the Gas [Supply] Regulations;

“Meter Installation” shall have the meaning as defined in the Gas Act [Chapter 116A];

1.4 Codes of Practices and Regulatory Requirements

This connection procedure shall be read in conjunction with the provisions in the Gas Act, Gas [Supply] Regulations, Gas [Metering] Regulations, Gas Supply Code, Gas Metering Code, Singapore Standard, SS608 – Code of Practice for Gas Installation and relevant Retailer's Handbook of Gas Supply, where applicable.

The demarcation of responsibility from the gas service pipe to the gas installation is provided in Appendix 1 for reference purpose.

1.5 Submission of Application

Please submit all connection enquiries and applications for gas connection and admittance request via the Gas Retailer on SP Group's eBusiness Portal ["Portal"]:

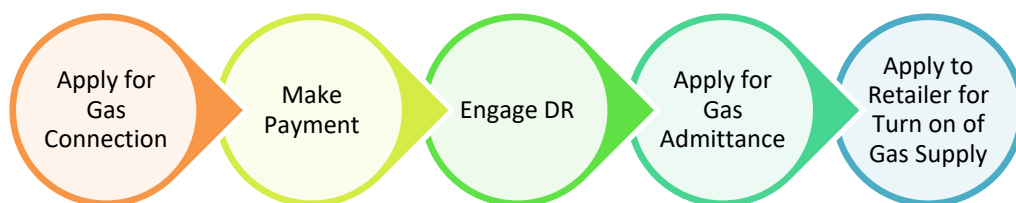
<https://ebiz.spgroup.com.sg/index.html>

For all other matters, please submit your enquiries to:

gasenquiry@spgroup.com.sg

2. Procedures for Gas Connection, Gas Admittance, and Gas Turn-On

Application for gas connection to the gas mains network shall be submitted through City Energy, the Town Gas Retailer, to the Transporter. The Retailer will liaise with the Transporter on behalf of the applicant for gas connection and admittance. The key steps for gas connection and gas admittance are outlined below. The detailed process flow chart and Town Gas Connection application forms can be found in Appendix 2 and 3 respectively.



2.1 Apply for Gas Connection

To apply for a town gas connection, the Retailer shall submit the following documents and information through the Portal:

- Endorsed Form GD1 - “Application for Gas Distribution Connection”; and
- Location / site plan showing
 - The project site;
 - Proposed connection point(s), indicating the demarcation of the responsibility. Connection to the GSIV, to be provided by the Transporter, shall be polyethylene material end.

The Transporter shall notify the Retailer on the outcome of the application within 14 days from the date of receipt of the application. If the application is successful, the connection charge will also be made known to the Retailer.

2.2 Make Payment

The Retailer shall confirm the project by making payment for the connection charge.

The Transporter shall commence work upon receipt of the connection charge payment from the Retailer. The Transporter shall commence permit application, procurement and construction works to extend the gas pipeline up to and including the GSIV. Typically, a lead time of 6 to 8 weeks is required to apply for and obtain services’ plans and opening permit

from the relevant authorities / agencies before excavation, pipe laying and connection works could commence.

2.3 Engage DR for Consumer's Gas Installation

The applicant shall engage a PE or a LGSW, as the case may require, as the DR for the project.

The Retailer and the DR shall liaise with the Transporter on the connection point at the property boundary, the work schedule, and other related matters throughout the entire project until commissioning.

The DR is responsible for the design, procurement and construction of the Gas Installation from the GSIV to the appliance/equipment, excluding the Meter Installation, in accordance to the Gas Act and its subsidiary legislations and applicable Code(s).

2.4 Apply for Gas Admittance

The DR shall certify completion and successful testing of the Gas Installation. When the Gas Installation is ready to receive gas, the DR shall apply, through the Retailer, to the Transporter to connect and admit gas into the Gas Installation up to, but excluding, the Meter Installation by submitting the following forms:

- Form GD2 - "Application for Admittance of Gas";

The DR shall conduct the necessary proof test and submit the completed Form GD3 "Certificate of Proof Test" and request for interim admittance of gas immediately prior to the Transporter connecting the Gas Installation to the gas pipeline network and admits gas into the Gas Installation up to, but excluding, the Meter Installation.

Upon successful interim admittance of gas, the Transporter shall issue the "Statement of Interim Admittance of Gas". Thereafter, the DR shall proceed to purge and commission the Gas Installation up to, but excluding, the Meter Installation.

The Transporter shall issue the "Statement of Admittance of Gas" upon certification by the DR of successful purging and commissioning of the Gas Installation up to, but excluding, the Meter Installation.

2.5 Apply to Retailer for Turn On of Gas Supply

The application for Turn On of Gas Supply shall be made to the Retailer. The Retailer shall carry out gas turn-on from the Meter Installation up to the appliances/equipment. The applicant is advised to refer to the Retailer's "Handbook for Gas Supply" for the latest procedures.

3. Guidelines for Other Applications

3.1 Apply for Replacement, Addition & Alteration Works

When supply of gas needs to be shut off to facilitate replacement, addition and alteration, or modification to the gas installation from the GSIV to the Meter Installation, the DR shall make the necessary arrangement with the Transporter via Transporter's email address in Section 1.5.

3.2 Apply for Disconnection

An application to disconnect a gas installation or gas fitting from a gas pipeline network shall be made by the responsible person to the Transporter in the following instances:

- When the gas supply to the premises has been discontinued; or
- When the supply of gas is no longer required; or
- When the premises are undergoing renovation or demolition and gas supply has to be disconnected for safety reasons.

Any application for the disconnection of the gas installation or gas fitting shall be made to the Transporter's email address in Section 1.5.

3.3 Apply for Re-connection

Any application for the re-connection of the gas installation or gas fitting shall be made to the Transporter, through the Retailer, via the Transporter's Portal in Section 1.5.



4. Charges

4.1 Connection Policy

The cost to connect a customer's gas installation or gas fitting to the Transporter's gas pipeline network varies from case-to-case, due to the proximity of the customer's location and the cost of the materials and services required for the gas connection. The Transporter will propose a feasible corridor and the most cost-effective connection to the applicant.

4.2 Connection Charge

The connection charge payable for all gas connection applications is the project cost less the deductible cost, subject to a minimum connection charge of zero. The description of each of the cost components are shown below.

[1] Project cost

All costs related to the provision of gas connection from the Transporter's gas pipeline network to the GSIV.

[2] Deductible cost

The Transporter's investment value based on the committed gas demand from the applicant for the new gas connection. The investment value is derived based on the net present value of the 5-Year revenue of the average consumption for each consumption category [see Appendix 5].

In addition, a Last Mile Standard Connection Charge ["LMSCC"] will be levied to recover the cost of "last mile" connection of the gas installation to the GSIV from the applicant. Details can be found in Appendix 6.

The town gas distribution connection deductible costs, LMSCC, standard connection charge for landed residential property and unit rates shall be reviewed and adjusted when deemed necessary by the Transporter.

The Transporter reserves the right to review the connection charge paid for any new connection and seek reimbursement for the first 5 years under-recovered revenue from the Retailer if the actual gas demand after 5 years of operation is less than 90% of the projected gas demand declared during application.

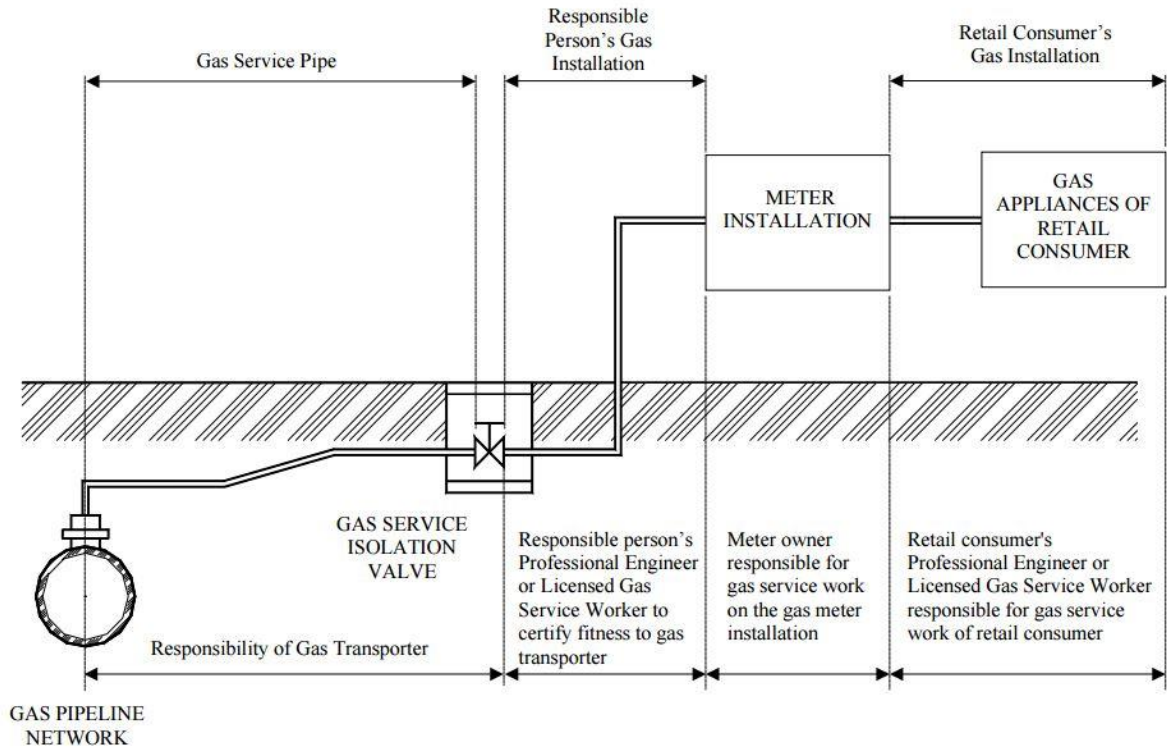
5. Pressure Regulation for Internal Gas Pipeline

With effect from 1 April 2020, when designing the internal pipe for any premise supplied with TG at low pressure, the DR shall ensure that the pressure supplied to any gas appliance shall not exceed 31 mbarg.

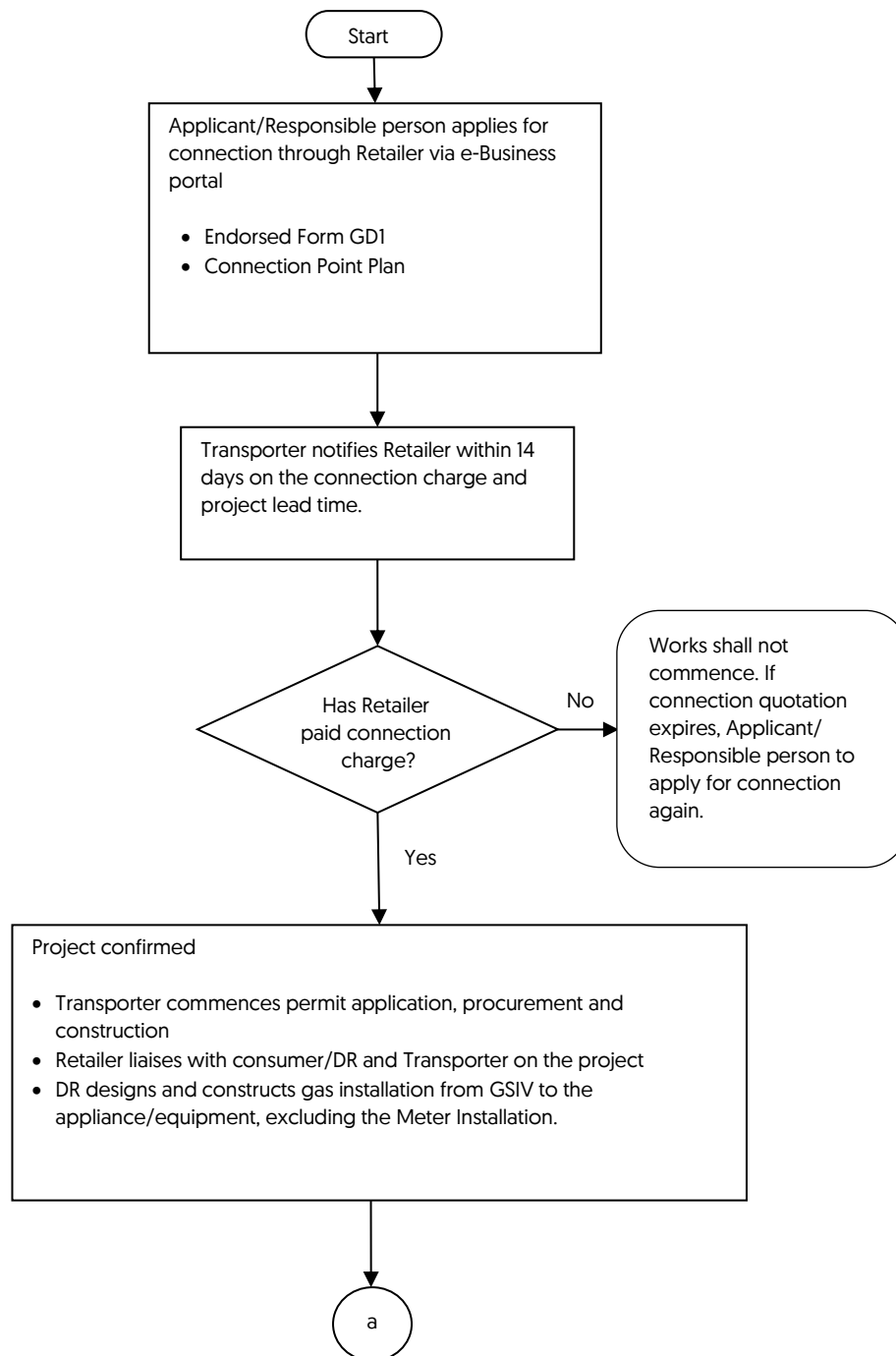
An accessible pressure measurement test point shall also be provided at the top of every gas riser.

6. Appendices

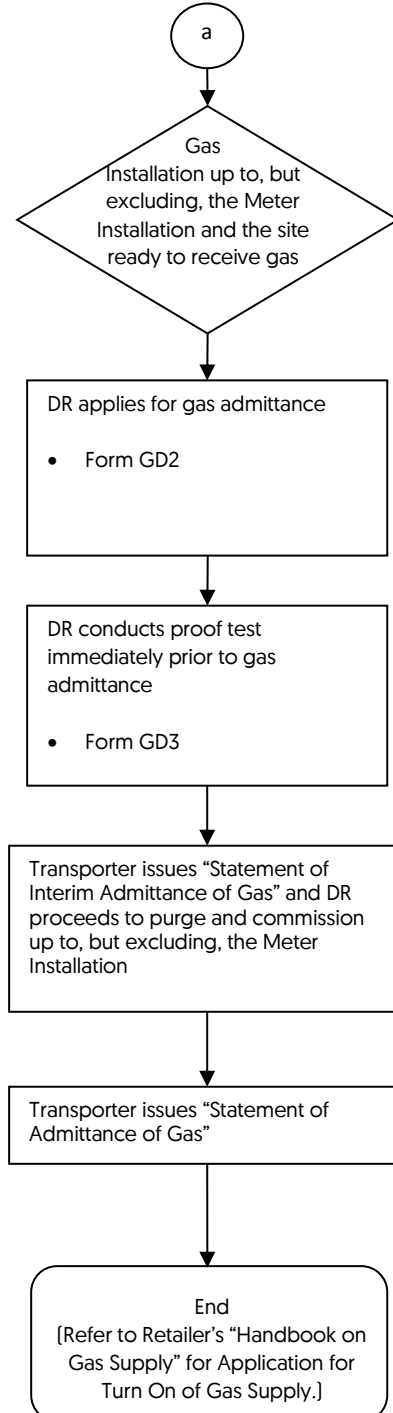
Appendix 1 – Demarcation of Responsibility



Appendix 2 – Town Gas Distribution Connection Flow Chart



Appendix 2 – Town Gas Distribution Connection Flow Chart (Con't)



Appendix 3 – Town Gas Connection Application Forms

S/No.	Form No.	Description
1	GD1	Application for Gas Distribution Connection
2	GD2	Application for Admittance of Gas
3	GD3	Certificate of Proof Test
4	GD4	Authorisation to Turn on Gas Meter Control Valve

Appendix 4 – Reference Rates

This sets out a non-exhaustive list of the main cost drivers and the corresponding unit rates used in the estimation of the capital investment for a new distribution pipeline. For the avoidance of doubt, the information set out here is provided solely for reference only and will be subject to changes in actual contract rates.

S/No.	Description	Size (mm)	Unit Rate (\$) excl. GST	Unit Rate (\$) incl. 9% GST
1	Supply and Laying of PE pipes and fittings [\$/m]	315	800	872
2	Connection to existing pipes [\$/job]	315	13,000	14,170
3	Installation of Valve [\$/job]	300	8,500	9,265
4	Installation of regulator [\$/pc]		43,500	47,415
5	Reinstatement of rigid pavement / concrete panel [\$/m ²]		300	327

Note: The amount of LTA road opening charges may vary due to the scope of the distribution project. For better clarity, please refer to LTA's website for the charging methodology for LTA road opening charges.

Appendix 5 – Deductible Component for Town Gas Distribution Connection

[wef 1 Apr 26]

1) For General, Bulk A and Bulk B Consumers

c = Consumption per Annum [kWh]	General Tariff (\$)	Bulk A Tariff (\$)	Bulk B Tariff (\$)
$c \leq 50,000$	-	-	-
$50,000 < c \leq 75,000$	20,000	20,000	-
$75,000 < c \leq 100,000$	30,000	25,000	-
$100,000 < c \leq 125,000$	40,000	35,000	-
$125,000 < c \leq 150,000$	50,000	45,000	-
$150,000 < c \leq 175,000$	55,000	50,000	-
$175,000 < c \leq 200,000$	65,000	60,000	-
$200,000 < c \leq 250,000$	80,000	70,000	-
$250,000 < c \leq 300,000$	95,000	85,000	-
$300,000 < c \leq 350,000$	115,000	100,000	-
$350,000 < c \leq 400,000$	130,000	115,000	-
$400,000 < c \leq 450,000$	145,000	135,000	-
$450,000 < c \leq 500,000$	165,000	150,000	-
$500,000 < c \leq 600,000$	190,000	170,000	-
$600,000 < c \leq 700,000$	225,000	-	190,000
$700,000 < c \leq 1,000,000$	295,000	-	250,000
$1,000,000 < c \leq 1,500,000$	435,000	-	370,000
$1,500,000 < c \leq 2,000,000$	605,000	-	515,000
Beyond 2,000,000	695,000	-	590,000

2) For Bulk E consumers

c = Consumption per Annum (kWh)	Bulk E Tariff (\$)
$c \geq 6,000,000$	1,060,000

Appendix 6 – Last Mile Standard Connection Charge

	<u>Pipe diameter (d)</u>	<u>LMSCC (\$)</u> Excl. GST	<u>LMSCC (\$)</u> incl. 9% GST
1	d < 100mm	500	545
2	200mm > d ≥ 100mm	800	872
3	300mm > d ≥ 200mm	2,000	2,180
4	d ≥ 300mm	3,200	3,488

Note:

- Standard connection charge of \$3,500 (\$3,815 incl. 9% GST) is only applicable for connection in front of a private landed residential property where the gas main is in LTA road reserve in front of the house. Connection to landed property shall be from the front of the house only.
- Figures may not reflect the full GST effect due to rounding